

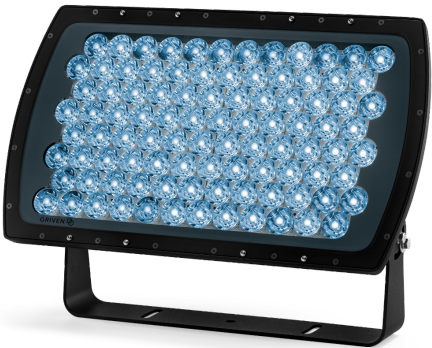
ONYX XQ

Static White



DESCRIPTION

ONYX XQ sets the standard for ultra-narrow beam floodlights where precise and uniform illumination at long distances is required. The award-winning luminaire combines 96 high power LEDs in static white with precision optics to produce a very narrow 4° beam. The LED driver is thermally isolated in a separate compartment for enhanced longevity. On-board control panel allows for stand-alone or master-satellite operation, as well as interface to external DMX controllers. Accessories for light control are available. All hardware is stainless steel.



Date: _____ Type: _____ Catalog Number: _____

Project Name: _____

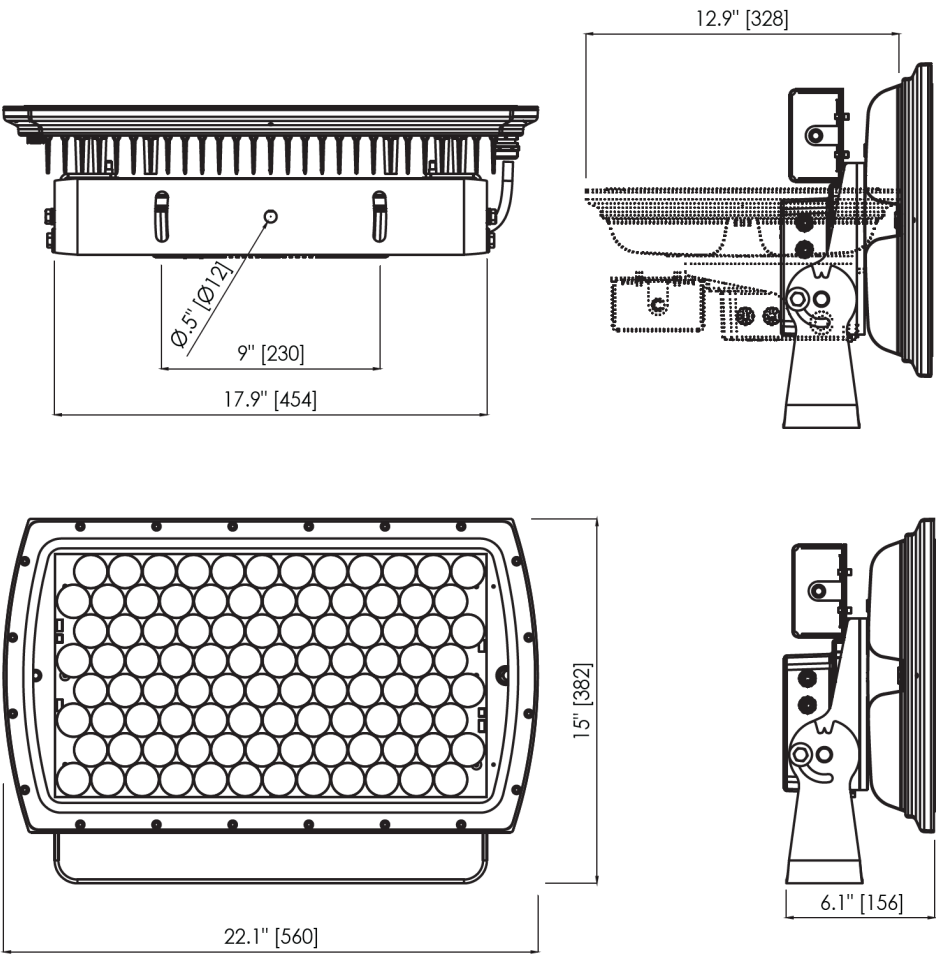
ORDERING INFORMATION

| LUMINAIRE | | | | | | | |
|-----------------|--------------|--------------------|---|-----------------|---------------------|------------------------|---------------------------|
| MODEL | COLOR | CONTROL | CABLE | VOLTAGE | OPTIC | FINISH | OPTIONS |
| OXXQ ONYX XQ | 27K 2700K | DMX-RDM DMX/RDM | S Power in (59 in.) , DMX in, DMX out (66.9 in.) | UNV 120-277V | US Ultra Spot 4° | A Anthracite Gray | MG Marine Grade |
| | 30K 3000K | | | | | B Black | 3G 3G Mounting Bracket |
| | 40K 4000K | | | | | G Griven Grey | |
| | | | | | | W White | |
| | | | | | | CC Custom RAL Color | |

| ONYX XQ | | | | |
|---|---------------------------|---|---------------|-------------------|
| PHYSICAL | HOUSING | Steel Mounting Yoke/Cast Aluminum Housing, scratch resistant paint | | |
| | HOUSING SIZE | 22.08"w x 15.05"h x 6.2"d | | |
| | WEIGHT | 39 lbs. (17.7 kg) | | |
| | EPA | 2.31 ft ² | | |
| | OPERATING TEMPERATURE | -40°C to 50°C (-40°F to 122°F) | | |
| PHOTOMETRIC | LED | Static White (3000K, 4000K, or 6500K White) | | |
| | # LEDS | 96 High Brightness Power LEDs | | |
| | DELIVERED LUMEN OUTPUT | Up to 22048 lumens | | |
| | EFFICACY | Up to 77 lumens per watt | | |
| | L70 LUMEN MAINTENANCE | 100,000 Hours @ 25°C | | |
| | # DISTRIBUTIONS | 1 | | |
| | LIGHT CONTROL ACCESSORIES | Snoot, 3G Mounting Yoke (Contact Factory) | | |
| LIGHT DISTRIBUTIONS* <small>*Values based on full output</small> | DISTRIBUTION | BEAM ANGLE | LUMENS | MAX CANDELA |
| | ULTRA SPOT | 4° | 19553 (3000K) | 2,672,406 (3000K) |
| | | | 20952 (4000K) | 2,863,615 (4000K) |
| | | | 22048 (6500K) | 3,013,411 (6500K) |
| ELECTRICAL | POWER CONSUMPTION | 286 watts max | | |
| | AMPERAGE | 2.4A @ 120V or 1.0A @ 277V | | |
| | CONTROL | DMX/RDM. Includes onboard standalone sequencing or master-satellite operation without DMX control systems when programmed with infra-red configuration remote (Ordering code AL1321) | | |
| | MODES | - Intensity (1 channel) - Stand-Alone Dimmer | | |
| CERTIFICATIONS | SAFETY | CSA Listed for Wet Locations (Pending) | | |
| | INGRESS PROTECTION | IP67 | | |
| | IMPACT RATING | IK09 | | |
| | EUROPEAN | RoHS | | |

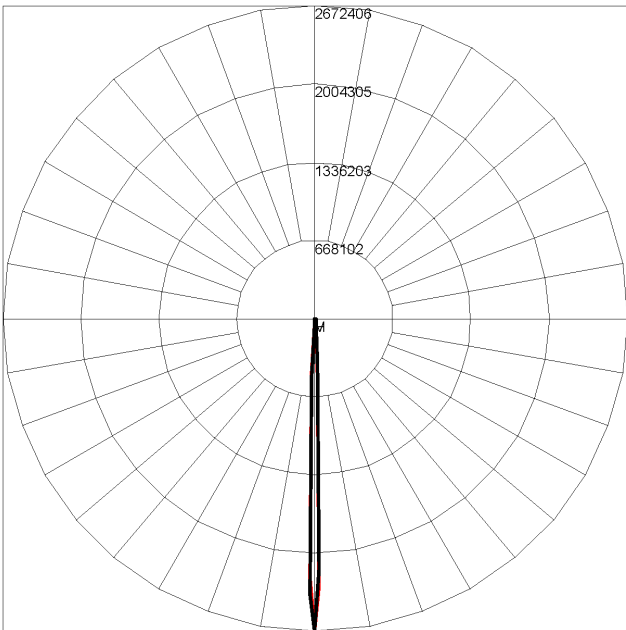
DIMENSIONS

All dimensions are shown in inches unless otherwise noted.



ULTRA SPOT 4°- 3000K

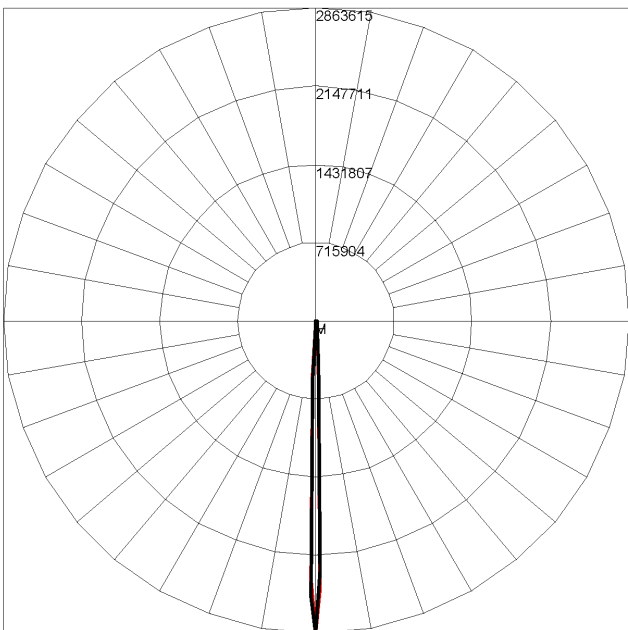
Maximum Candela = 2672406 / 19553 lms



Maximum Candela = 2672406.25 Located At Horizontal Angle = 0, Vertical Angle = 0
H - Horizontal Axial Candela
V - Vertical Axial Candela

ULTRA SPOT 4°- 4000K

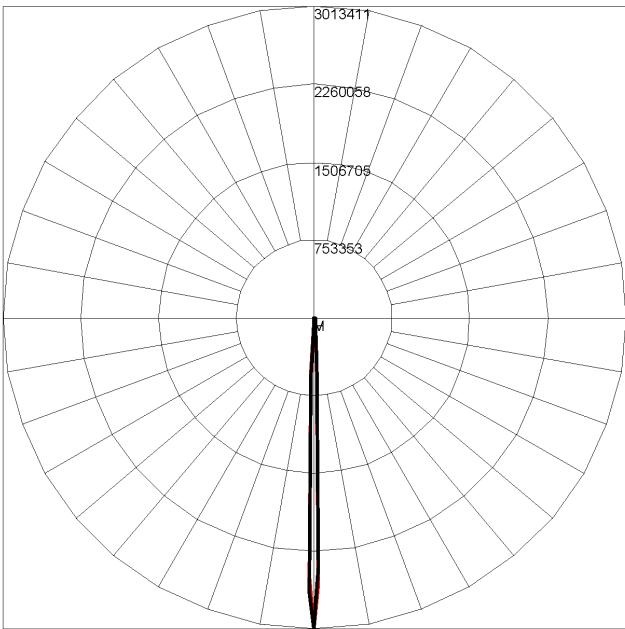
Maximum Candela = 2863615 / 20952 lms



Maximum Candela = 2863614.5 Located At Horizontal Angle = 0, Vertical Angle = 0
H - Horizontal Axial Candela
V - Vertical Axial Candela

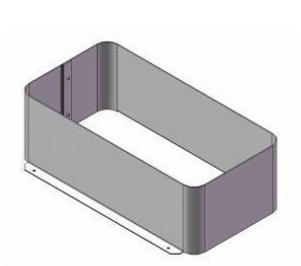
ULTRA SPOT 4°- 6500K

Maximum Candela = 3013411 / 22048 lms

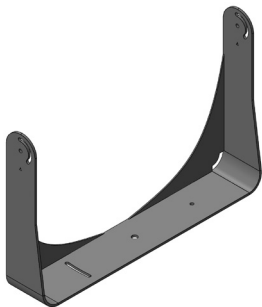


Maximum Candela = 3013410.5 Located At Horizontal Angle = 0, Vertical Angle = 0
H - Horizontal Axial Candela
V - Vertical Axial Candela

ACCESSORIES



AL4108- XX*
Snoot

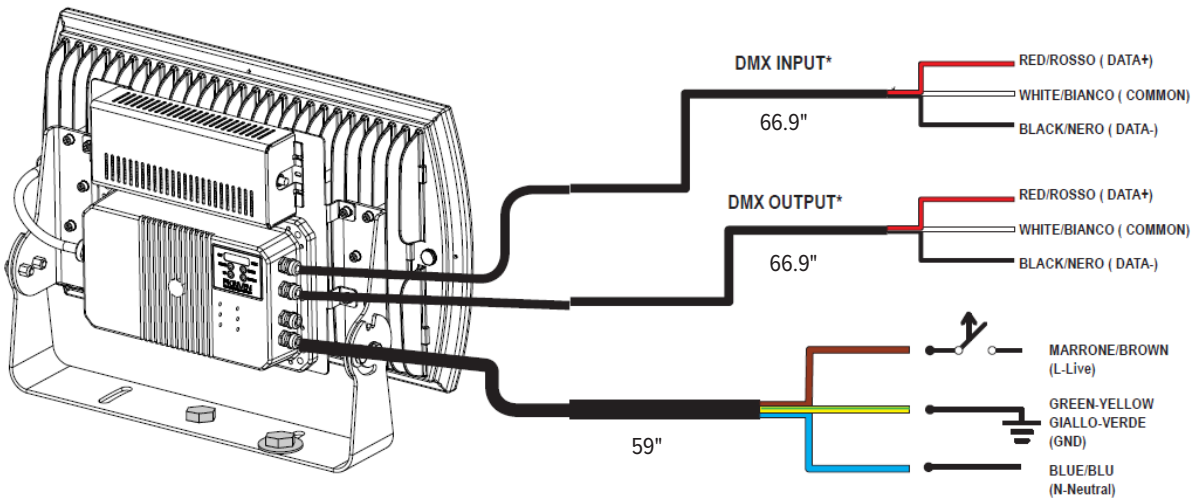


AL8257- XX*
Mounting Yoke

XX*- ACCESSORY FINISHES

| | |
|----|--------------------|
| AG | Anthracite Grey |
| BL | Black |
| SG | Griven Silver Grey |
| WH | White |
| CC | Custom Color |

CONNECTIONS



*Contact Factory for 0-10v wiring connection diagram